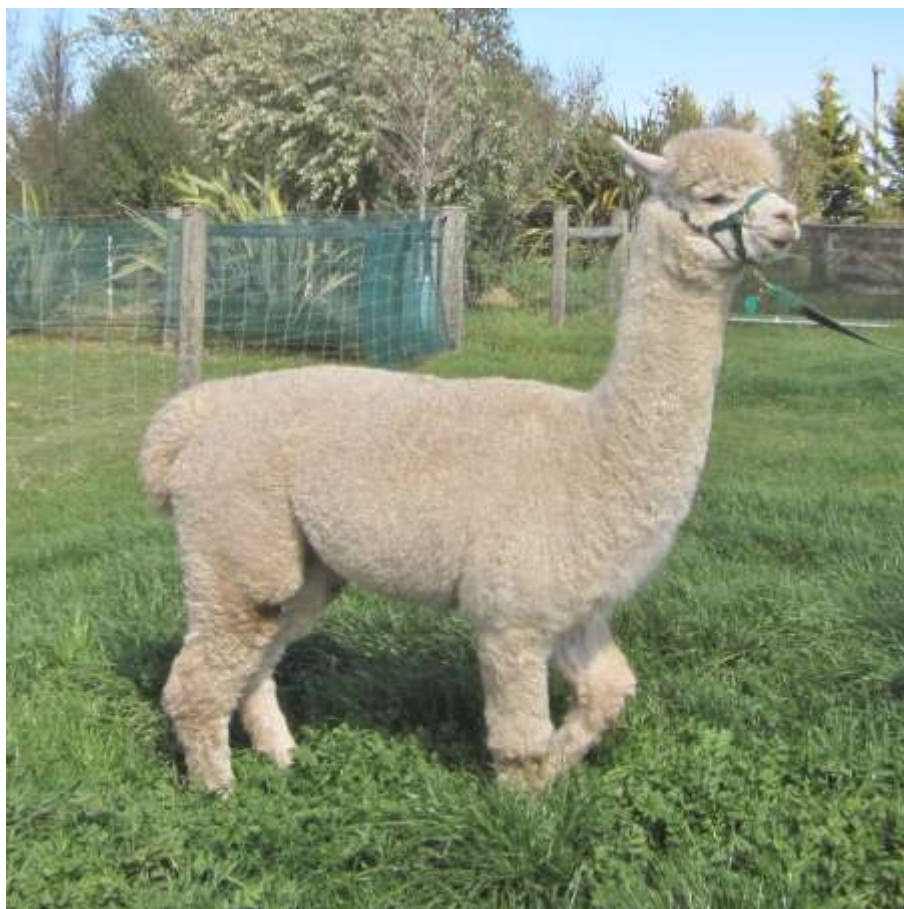


Aquaviva Alpacas

Aquaviva Pearl

Aquaviva Herd Reduction Sale



Name	Aquaviva Pearl				
Ear Tag	AQUK0001	Registry No.	1010410		
Birth Date	4-Feb-2014	Sex	Female	Phenotype	Huacaya
Colour	Solid White				
Sire	Homestead Farm Apollo - LF (84230)				
Dam	Aquaviva Eringa Park Aroma - (S)DF (57164)				
Description	<p>Pearl is an alpaca with special parents. Her dam, Eringa Park Aroma has produced many Supreme Champions and has held her micron and consistency into her 16th fleece. Her sire, Homestead Farm Apollo, was a Supreme Champion (both in breed and fleece shows) at the NZ National Show and has won numerous other awards.</p> <p>Pearl has a lovely white soft fleece with a long staple. Her fleece has retained relatively low micron and is fully commercially useable.</p> <p>Pearl had her first cria this year and she has proved to be a very dedicated mother, Her female cria Grace has been growing very well.</p>				
Fibre	<p>1st fleece: 2014 - 17.2 mic, SD 3.8, CF 99%, 78mm staple (9 months), CRV 53.3 2nd fleece: 2015 - 18.4 mic, SD 3.5, CV 18.8, CF 99%, 81mm staple, CRV 59.5 3rd fleece: 2016 - 22.6 mic, SD 4.7, CV 20.9, CF 93.4%, 105mm staple 4th fleece: 2017 - 24.4 mic, SD 4.6, CV 18.9, CF89%, 95mm staple, CRV 49.0</p>				
Current Mating	<p>Pearl has not been mated in 2018 due to the birth of her last cria late in the season. A mating to Waratah Flats Achilles can be arranged at a discounted price if required.</p>				

Aquaviva Pearl



Pearl and her female cria Grace in September 2018

Pearl with her female cria Grace in March 2018.



Aquaviva Pearl

Family Tree

Sire

Sire Registry No.: 84230 Homestead Farm Apollo - LF

Dam

Dam Registry No.: 57164 Aquaviva Eringa Park Aroma - (S)DF